



## 2015+ POLARIS SLINGHOT SWING ARM MUD FLAP INSTALLATION INSTRUCTIONS

For high resolution color images of these instructions, please visit <http://www.rallyarmor.com>

Check wheel clearance after installation, especially vehicles outfitted with non-OEM wheels and suspensions.

**⚠ RALLY ARMOR IS NOT RESPONSIBLE FOR DAMAGE OR LOSS OF INSTALLED FLAPS. ⚠**

To the customer: Retain these instructions after installation. They may be necessary for installing other optional parts or removal of this accessory.

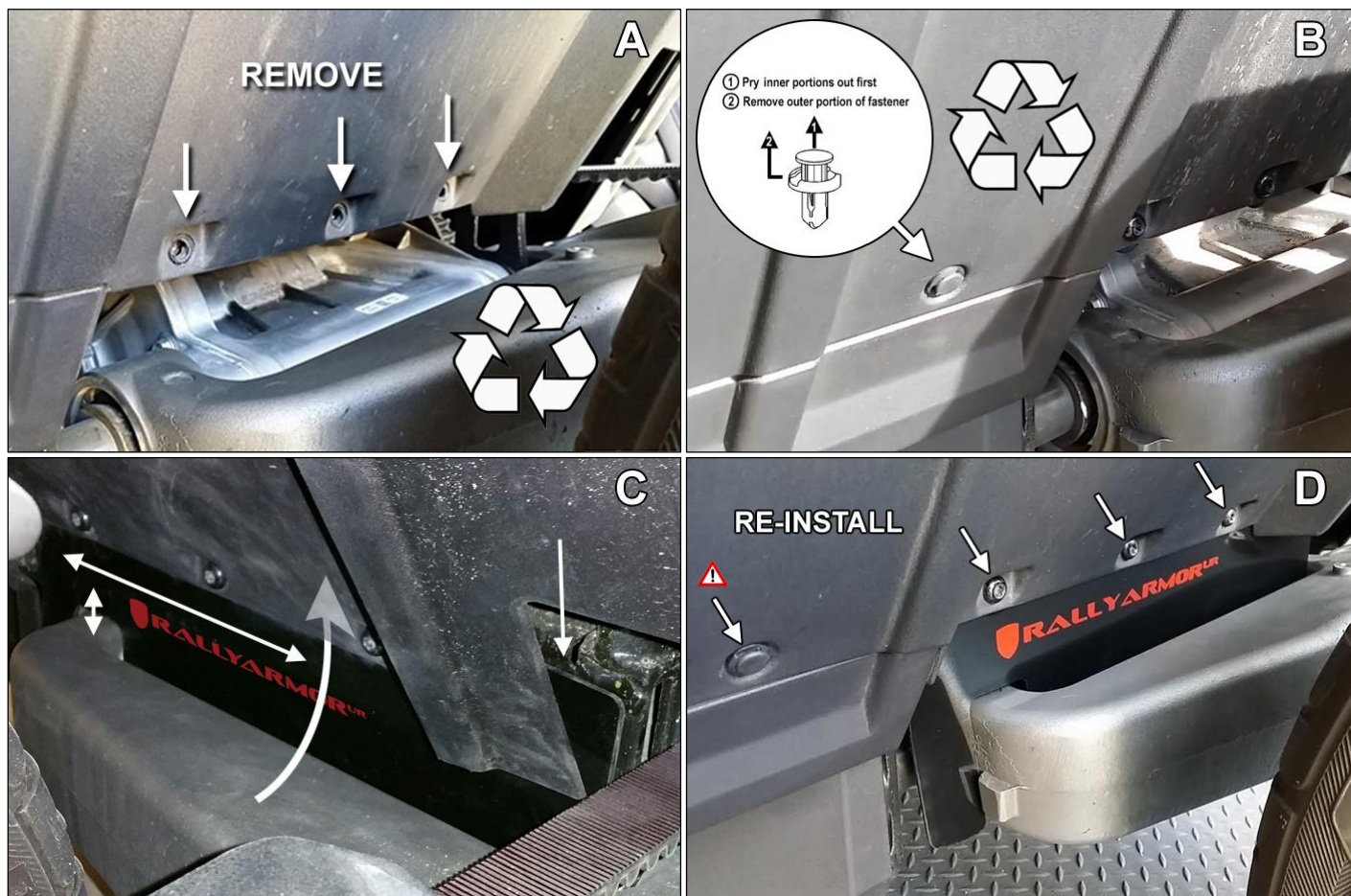
**Recommended tools:** Offset, ratcheting or stubby ratchet with Torx bit set, small flat head screwdriver.

**(Figure A)** Park vehicle on an even surface. Remove the three rear trim retaining bolts. You will be reusing these fasteners.

**(Figure B)** Remove plastic side trim retainers as to ease installation as to allow additional trim retainer movement. You will be re-using these fasteners.

**(Figure C)** Slide Mud Flap **behind** trim retainer panel. Align three mounting holes with the three OEM mounting points. Loosely mount original trim retainer bolts through the trim retainer and mud flap bolts. Adjust mud guard. The oversized mounting points on the mud flap will allow you to adjust fitment to ensure left/right/up down clearance.

**(Figure D)** Tighten trim retainers only until seated. Replace previously removed OEM plastic trim retainer.



**Rally Armor is not responsible for damage or loss of installed flaps.**

All content included on these instructions is the copyright of Rally Armor® LLC