

IMF15



2008-2014 SUBARU STI & 2011-14 SUBARU WRX HATCHBACK ONLY

View instructions and photos online www.rallyarmor.com

CARE AFTER INSTALLATION Once installed, the vehicle owner is responsible for the condition of the mud flaps and all costs associated with replacing damaged or lost parts. Warranty covers manufacturer defect on new, never installed parts.

⚠ Watch for blind spots when parking ⚠ Avoid contact with curbs, bumps and objects that can compress the flaps with excessive force. Be sure to check wheel clearances, especially on vehicles equipped with aftermarket wheels and suspensions.

QUESTION ON INSTALLATION? CONTACT US ONLINE www.rallyarmor.com/support

NEED TO PURCHASE REPLACEMENT PARTS? SEND RECEIPT OR PHOTO OF RALLY ARMOR LOGO ON FLAPS TO US www.rallyarmor.com/support

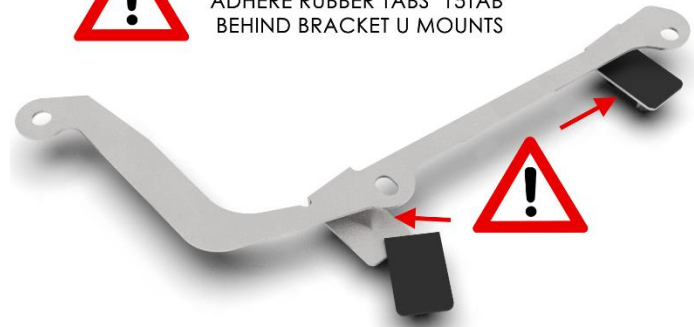
IMPORTANT NOTES



INSTALLATION KIT CONTENTS

QUANTITY	PART	ITEM ID
10	POLYGON CLIP	POLCLP
6	SMALL WASHER	SMWASH
6	LARGE WASHER	WASH
4	LOCK NUT	SSLNUT
8	SHORT SCREW	1SS
4	FLAT HEAD SCREW	15FHSS
2	INSERT	INS
1	RIGHT FRONT MOUNTING BRACKET	BMF15-RF
1	LEFT FRONT MOUNTING BRACKET	BMF15-LF
1	RIGHT REAR MOUNTING BRACKET	BMF15-RR
1	LEFT REAR MOUNTING BRACKET	BMF15-LR
4	RUBBER MOUNTING TABS	15TAB

ATTENTION BEFORE INSTALLING
ADHERE RUBBER TABS 15TAB BEHIND BRACKET U MOUNTS



Recommended Tools Low-profile offset or ratcheting screw driver, 7/16th wrench, flathead screwdriver.

Important Tips Installation should be done on an even surface. Do not use power tools to tighten hardware. Hand tools only. Avoid overtightening.

RALLY ARMOR - A BIT ABOUT OUR STANDARD IN MUD FLAPS

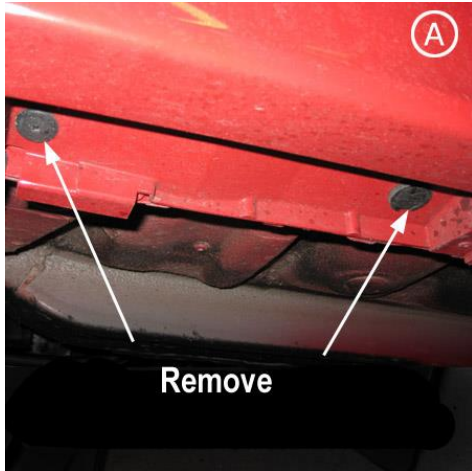
Rally Armor mud flaps are fabricated from a high grade polyurethane plastic that is rigorously reviewed for quality and consistency. As with all manufacturing processes, controlled conditions and multiple QC checkpoints minimize major irregularities, however certain very minor surface layer marks appear periodically. These are visual variations that do not affect construction nor do they impede the performance of the flaps. Most matte away as the material ages naturally with continued exposure to the outdoors. Each flap is unique in appearance yet all are equally structurally sound.

2008-2014 SUBARU STI & 2011-14 SUBARU WRX HATCHBACK ONLY

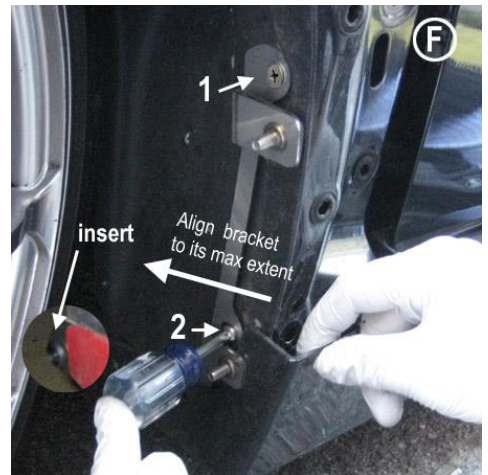
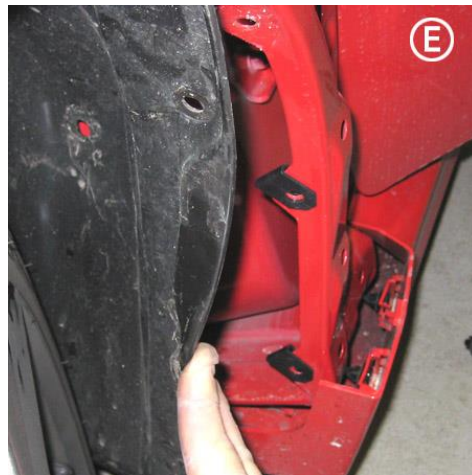
Front Mud Flap Installation

Begin by parking the vehicle on an even surface. Turn the steering wheel towards the side you are working on to gain access to the wheel well area.

- **(Figure A)** Open car door to avoid contact with side skirt. Remove first two push clips under the side skirt.
- **(Figure B)** Carefully unclip front portion of side skirt by pulling the outer edge away just enough to release two horizontal retainer clips.
- **(Figure C)** Remove the plastic fender cover in increments. Pull upper left/right portions of the cover until each plastic retainer clip is released and work downwards towards side skirt.



- **(Figure D)** Remove the four OEM fender liner retainer clips. Pull liner away to gain access to inner fender.
- **(Figure E)** Place two supplied clips (PoCI) over mounting tabs at an angle (as shown).
- **(Figure F)** Reinstall fender liner. Place front metal bracket over mounting points with lower portion tucked between side skirt and liner. Thread flat head screws (15FHSS) into corresponding two upper mounting points through liner, into clips. Do not fully tighten. Place insert (Ins), until flush, into the innermost mounting slot of bracket. Remount previously removed upper and inside fender liner clips. **Important:** Lower mounting of bracket is slotted. Align the lower portion of bracket at its fullest extent of the slot **in towards the vehicle**.



- **(Figure G)** Loosely fit fender cover back on to the vehicle and adjust mounting bracket clearances to cover and side skirt by slightly tightening or loosening mounting screws. **Important:** Lower mounting point of bracket is slotted. Align the lower innermost portion of the bracket by adjusting it inwards, to its fullest extent into the vehicle, prior to final bolting.
- **(Figure H)** Replace cover and side skirt when adjustment is complete. Fitment is correct when fender cover lip can be slightly compressed by hand

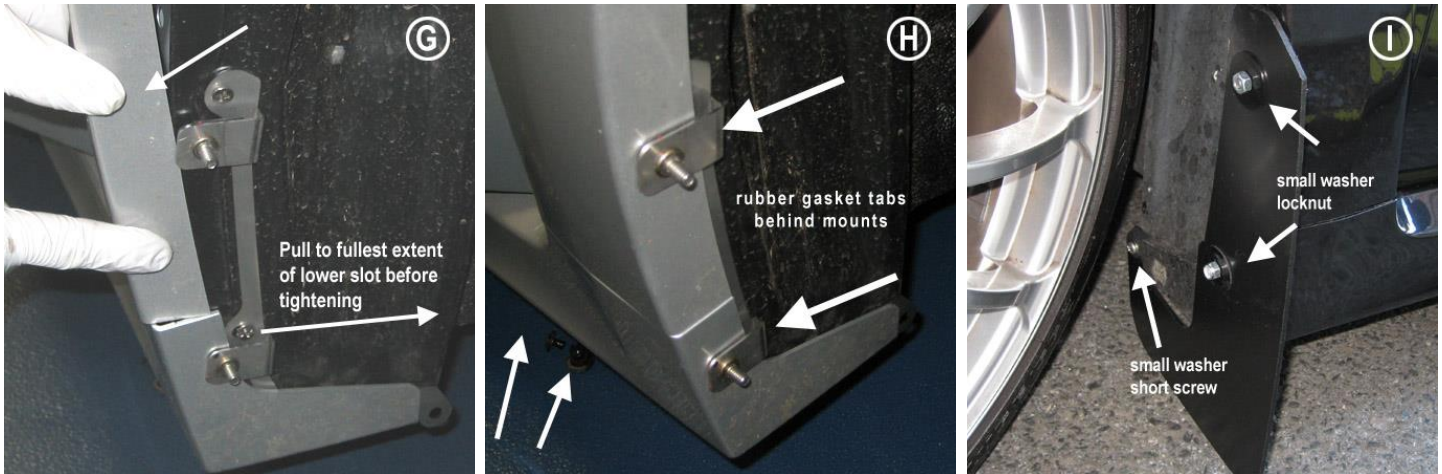
IMF15



2008-2014 SUBARU STI & 2011-14 SUBARU WRX HATCHBACK ONLY

and rests comfortably against **protective rubber gaskets behind bracket tabs**. Remount two OEM lower side skirt clips and two remaining OEM fender liner fasteners.

- **(Figure I)** The front mud flap mounts with the logo facing the rear of the vehicle. Place the mud flap against the corresponding mounting points on the bracket passing small washers (SmWash) over the flap through the threaded bolts. Install lock nuts (SSLnut) on the two threaded mounting points. Thread a short screw (1SS) with small washer through the flap into the mounted insert (Ins). Tighten all points until snug. Do not over tighten.



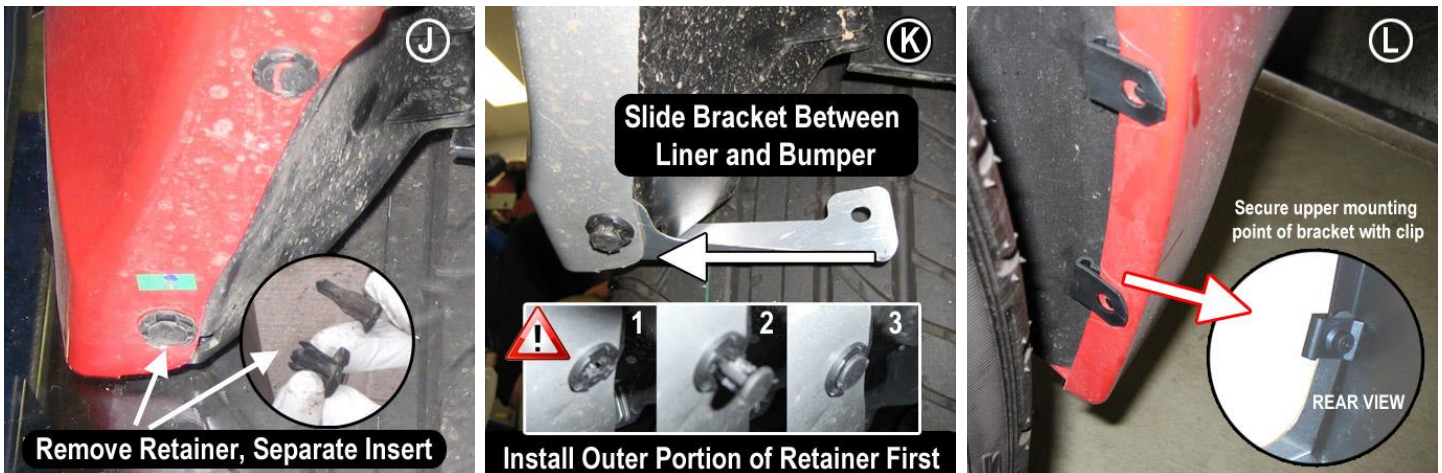
Rear Mud Flap Installation

- **(Figure J)** Working from the rear of the vehicle, remove stock retainer from under the rear bumper area as shown.

Important: After removal, completely separate inner clip from outer assembly retainer.

- **(Figure K)** Slide rear metal bracket between bumper and fender liner. Secure bracket by reinstalling outer assembly retainer into lower oval mounting hole of bumper, though mounting bracket and liner until flush. **Important: Install outer assembly without inner insert** as the liner may have shifted and could require realignment. Tap inner portion of insert into place to secure mounting bracket.

- **(Figure L)** Slide two supplied clips (PolCI) over stock mounting points in bumper. **Important: Lower clip mounts over both bumper and upper mounting point of metal bracket.**



IMF15



2008-2014 SUBARU STI & 2011-14 SUBARU WRX HATCHBACK ONLY

- **(Figure M)** Place a supplied clip (PoCI) over the inner mounting point of the bracket.
- **(Figure N)** Position the rear mud flap with logo facing the rear of the vehicle. Using a short screw (1SS) and a large washer (Wash), bolt the mud flap to each mounting point. Be sure that the inner mounting point is not interfering with the wheel. If needed, adjust mounting point by angling the bracket towards the rear of the vehicle and away from the tire. Do not tighten mounting points. Adjust mud flap first.
- **(Figure O)** Align outer edge of the flap by incrementally adjusting the lower/upper portion of the flap and walking away from the vehicle until the flap is perpendicular to even ground. Tighten all mounting screws until snug against washer. Do not over tighten.



- Repeat the front and rear installation process for the other side of the vehicle to complete installation.

All content included on these instructions, such as text, graphics, logos is the copyright of Rally Armor LLC