



**2011-14 SUBARU WRX & STI SEDAN ONLY THIS APPLICATION**

**DOES NOT FIT THE 2008+ WRX & STI HATCHBACK/5 DOOR OR IMPREZA**

View instructions and photos online [www.rallyarmor.com](http://www.rallyarmor.com)

**CARE AFTER INSTALLATION** Once installed, the vehicle owner is responsible for the condition of the mud flaps and all costs associated with replacing damaged or lost parts. Warranty covers manufacturer defect on new, never installed parts.

⚠ Watch for blind spots when parking ⚠ Avoid contact with curbs, bumps and objects that can compress the flaps with excessive force. Be sure to check wheel clearances, especially on vehicles equipped with aftermarket wheels and suspensions.

QUESTION ON INSTALLATION? CONTACT US ONLINE [www.rallyarmor.com/support](http://www.rallyarmor.com/support)

NEED TO PURCHASE REPLACEMENT PARTS? SEND RECEIPT OR PHOTO OF RALLY ARMOR LOGO ON FLAPS TO US [www.rallyarmor.com/support](http://www.rallyarmor.com/support)

**IMPORTANT NOTES**



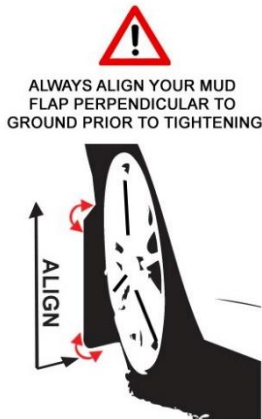
**ALWAYS TEST COMPATIBILITY WITH YOUR SPECIFIC WHEEL, TIRE AND SUSPENSION COMBINATION**



**ALWAYS USE CAUTION DURING PARKING/REVERSAL SCENARIOS**



**CLEANING INSTRUCTIONS: USE WATER AND SOFT CLOTH TO CLEAN FLAPS. AVOID SOLVENT BASED CLEANERS**

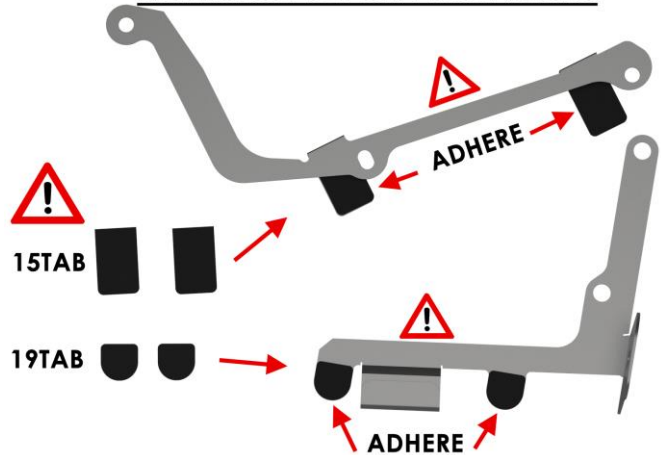


**ALWAYS ALIGN YOUR MUD FLAP PERPENDICULAR TO GROUND PRIOR TO TIGHTENING**

**INSTALLATION KIT CONTENTS**

QUANTITY	PART	ITEM ID
6	POLYGON CLIP	POLCLP
12	SMALL WASHER	SMWASH
8	LOCK NUT	SSLNUT
4	SHORT SCREW	1SS
4	FLAT HEAD SCREW	15FHSS
2	INSERT – WITHOUT PLASTIC SCREW	INS
2	INSERT -WITH PLASTIC SCREW	SCW INS
1	RIGHT FRONT MOUNTING BRACKET	BMF15-RF
1	LEFT FRONT MOUNTING BRACKET	BMF15-LF
1	RIGHT REAR MOUNTING BRACKET	BMF19-RR
1	LEFT REAR MOUNTING BRACKET	BMF19-LR
4	FRONT RUBBER MOUNTING TABS	15TAB
4	REAR RUBBER MOUNTING TABS	19TAB

**ATTENTION BEFORE INSTALLING**



**Recommended Tools** Low-profile offset or ratcheting screw driver, 7/16<sup>th</sup> wrench, flathead screwdriver.

**Important Tips** Installation should be done on an even surface. Do not use power tools to tighten hardware. Hand tools only. Avoid overtightening.

**RALLY ARMOR - A BIT ABOUT OUR STANDARD IN MUD FLAPS**

Rally Armor mud flaps are fabricated from a high grade polyurethane plastic that is rigorously reviewed for quality and consistency. As with all manufacturing processes, controlled conditions and multiple QC checkpoints minimize major irregularities, however certain very minor surface layer marks appear periodically. These are visual variations that do not affect construction nor do they impede the performance of the flaps. Most matte away as the material ages naturally with continued exposure to the outdoors. Each flap is unique in appearance yet all are equally structurally sound.

## 2011-14 SUBARU WRX & STI SEDAN ONLY *THIS APPLICATION*

*DOES NOT FIT THE 2008+ WRX & STI HATCHBACK/5 DOOR OR IMPREZA*

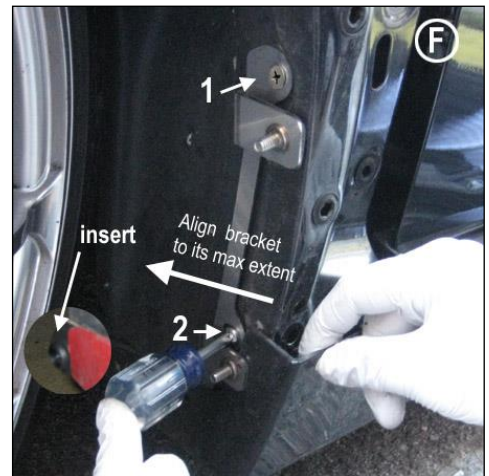
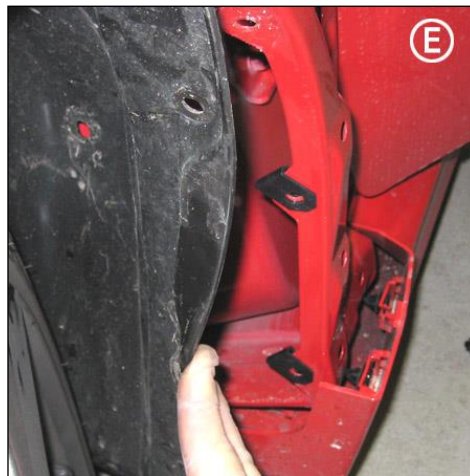
### Front Mud Flap Installation

Begin by parking the vehicle on an even surface. Turn the steering wheel towards the side you are working on to gain access to the wheel well area.

- **(Figure A)** Open car door to avoid contact with side skirt. Remove first two push clips under the side skirt.
- **(Figure B)** Carefully unclip front portion of side skirt by pulling the outer edge away just enough to release two horizontal retainer clips.
- **(Figure C)** Remove the plastic fender cover in increments. Pull upper left/right portions of the cover until each plastic retainer clip is released and work downwards towards side skirt.



- **(Figure D)** Remove the four OEM fender liner retainer clips. Pull liner away to gain access to inner fender.
- **(Figure E)** Place two supplied clips (PoCI) over mounting tabs at an angle (as shown).
- **(Figure F)** Reinstall the fender liner. Place front metal bracket over mounting points with lower portion tucked between side skirt and liner. Thread flat head screws (15FHSS) into corresponding two upper mounting points through liner, into clips. Do not fully tighten. Place insert (Ins), until flush, into the innermost mounting slot of bracket. Remount previously removed upper and inside fender liner clips. **Important:** Lower mounting point of bracket is slotted. Align the lower portion of bracket at its fullest extent of the slot **in towards the vehicle.**



- **(Figure G)** Loosely fit fender cover back on to the vehicle and adjust mounting bracket clearances to cover and side skirt by slightly tightening or loosening mounting screws. **Important:** Lower mounting point of bracket is slotted. **Align the lower innermost portion of**

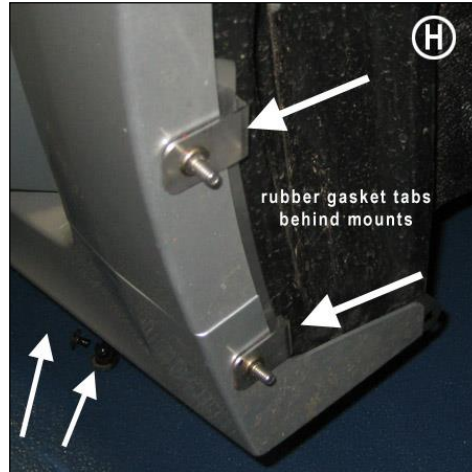
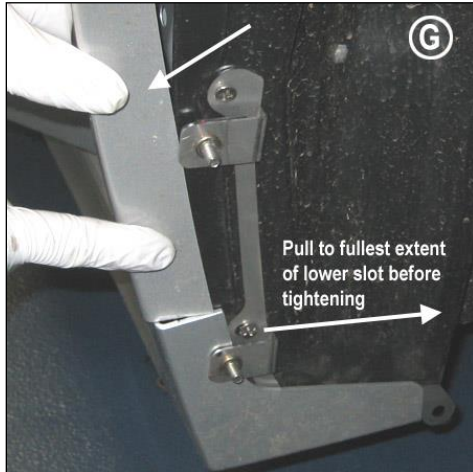
## 2011-14 SUBARU WRX & STI SEDAN ONLY *THIS APPLICATION*

*DOES NOT FIT THE 2008+ WRX & STI HATCHBACK/5 DOOR OR IMPREZA*

the bracket by adjusting it inwards, to its fullest extent into the vehicle, prior to final bolting.

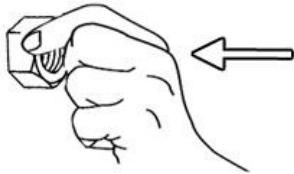
- **(Figure H)** Replace cover and side skirt when adjustment is complete. Fitment is correct when fender cover lip can be slightly compressed by hand and rests comfortably against **protective rubber gaskets behind bracket tabs**. Remount two OEM lower side skirt clips and two remaining OEM fender liner fasteners.

- **(Figure I)** The front mud flap mounts with the logo facing the rear of the vehicle. Place the mud flap against the corresponding mounting points on the bracket passing small washers (SmWash) over the flap through the threaded bolts. Install lock nuts (SSLnut) on the two threaded mounting points. Thread a short screw (1SS) with small washer through the flap into the mounted insert (Ins). Tighten all points until snug. Do not overtighten.



**Important**

The inner liner and side skirt area is specifically designed to be visible and unobstructed for maximum tire clearance. This allows for improved OEM and aftermarket wheel compliance.



To avoid misthreading, always hand thread locknuts to bolts. Tighten afterwards with appropriate tool only until snug.



## Rear Mud Flap Installation

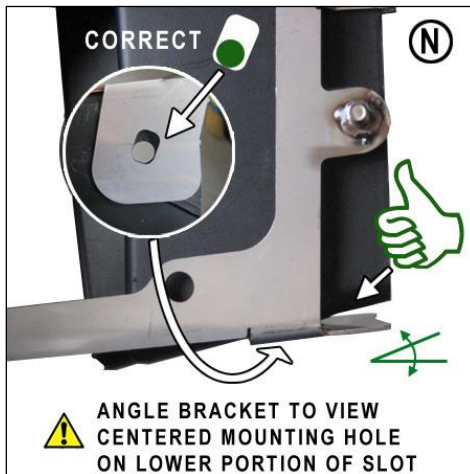
- **(Figure J)** Remove the 5 stock retainers that attach the inner black bumper piece to the bumper cover and vehicle.
- **(Figure K)** Remove the inner bumper piece from vehicle.
- **(Figure L)** Slide tabbed or folded end of bracket over outer edge of bumper piece where it meets bumper cover. Align the lower portion of the bracket at an angle.

**2011-14 SUBARU WRX & STI SEDAN ONLY THIS APPLICATION**

**DOES NOT FIT THE 2008+ WRX & STI HATCHBACK/5 DOOR OR IMPREZA**



- (Figure M) Example of bracket **incorrectly** positioned. Lower portion of bracket should not be parallel to cover.
- (Figure N) Example of bracket **correctly** positioned. Mounting hole will be visible through the lower slot of bracket.
- (Figure O) Note proper tabbed end placement on cover. The components will align during re-installation into bumper cover.



- (Figure P) Position the bumper piece assembly with bracket back on to vehicle. Position the bracket tabs over bumper cover.
- (Figure Q) **Important-** Check the make sure that the upper portion of bumper piece notch is installed correctly on the vehicle.
- (Figure R) Reinstall bumper piece with original OEM fasteners. For the lowest point underneath bumper cover, use the supplied insert with plastic screw (Scw Ins). **Important-** lower portion of bracket mounts BETWEEN BUMPER COVER and INNER BUMPER PIECE

## 2011-14 SUBARU WRX & STI SEDAN ONLY *THIS APPLICATION*

*DOES NOT FIT THE 2008+ WRX & STI HATCHBACK/5 DOOR OR IMPREZA*



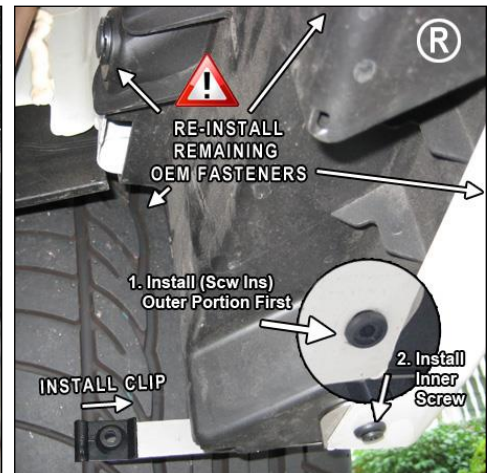
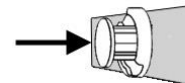
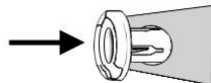
THE LOWER PORTION OF THE BRACKET MOUNTS **BETWEEN** THE BUMPER COVER AND INNER PIECE

**DO NOT MOUNT**  
REAR BRACKET  
UNDERNEATH BUMPER  
IN THIS MANNER



**! IMPORTANT TO RE-INSTALL FASTENERS ON INNER BUMPER PIECE (Including ScwIns)**

1. REMOVE INNER PORTION OF FASTENER    2. INSERT OUTER PORTION OF MOUNTING HOLE    3. INSERT INNER PORTION TO SECURE FASTENER



• **(Figure S)** Place the mud flap against the corresponding mounting points on the bracket. Base of threaded bolt must be inside of mounting point of mud flap. Pass small washers (SmWash) over the flap on to the threaded bolts. Install lock nuts (SSLnut) on the two threaded mounting points. Thread a short screw (1SS) with small washer through the flap into the mounted clip (PolCl). Do not fully tighten as you will be aligning the flap.

• **(Figure T)** Align outer edge of the flap by incrementally adjusting the lower portion of the flap and walking away from the vehicle until the flap is perpendicular to even ground.



## 2011-14 SUBARU WRX & STI SEDAN ONLY *THIS APPLICATION*

DOES NOT FIT THE 2008+ WRX & STI HATCHBACK/5 DOOR OR IMPREZA

- **(Figure U)** You must adjust the inner mounting point by holding the outer edge of the assembly and gently bending the inner bracket about a ¼" towards the rear of the vehicle, away from the tire to ensure adequate clearance during suspension compression. Tighten all mounting screws and nuts only until snug against washer. Do not over tighten.



Check wheel clearance after installation, especially on vehicles outfitted with non-OEM offset wheels and suspensions. Adjust to accommodate accordingly in these scenarios. Rally Armor is not responsible for damage or loss of installed flaps.

All content included on these instructions is the copyright of Rally Armor® LLC