

Rally Armor GC8 Classic Mud flap Mounting Instructions (93-01)

Please read the instructions thoroughly before attempting to mount your mud flaps.

Rally Armor always recommends professional installation

Please see <http://www.rallyarmor.com> for a closer look at the photos

Your mounting hardware has been inspected and checked at our facilities. It consists of:

- 10 Plastic Clips
- 10 Washers
- 8 Short Stainless Steel Screws
- 2 Long Stainless Steel Screws
- 2 Spacers

Rear Flaps (May require removal of tires depending on access to holes)****The rear mud flaps utilize only two of the outer holes per flap as the third hole is used for the machine to hold on to the flap when we create it.****

Place two polygon edge clips over the two holes in the rear bumper:



Note: The hardware is quite strong and self threading but over-tightening the clips beyond their limit is not recommended on any of the hardware)

Place mud flap up against clips and bolt the washer/short screws until just snug , **adjust flaps back and forth to make sure that they are perpendicular to the ground and even.** Bolt down when proper fitment is attained.

Always walk away from the car when you want to make sure:



Do the same for the other side.

Front Flaps

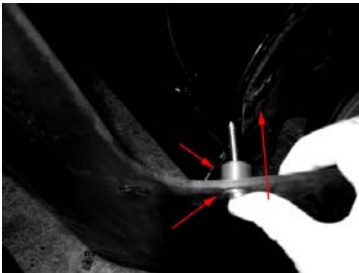
Start by removing the fender liner clips



Pull back the liner a bit and the side skirt down slightly, be careful **not** to rip the wheel well plastic, as it tears very easily if mishandled, pull back slowly. Place clips over metal slots.

Place the fender liner back slowly, make sure the liner is covering the clips, Note: liner may slightly touch clips on the inside when placing it back. Confirm that clip has not moved before bolting.

Place a bushing, flap, long bolt, and washer on the inner gc8 front flap slot. **Note: The hardware is quite strong and self threading but over-tightening the clips beyond their limit is not recommended on any of the hardware.**



Bolt on inner slot then bolt remaining two short screws/washers:



Adjust flaps back and forth to make sure that they are perpendicular to the ground and even. Bolt down when proper fitment is attained.