



## 2019+ Toyota Corolla Hatchback Mud Flap Installation Instruction

View instructions and photos online [www.rallyarmor.com](http://www.rallyarmor.com)

**CARE AFTER INSTALLATION** Once installed, the vehicle owner is responsible for the condition of the mud flaps and all costs associated with replacing damaged or lost parts. Warranty covers manufacturer defect on new, never installed parts.

⚠ Watch for blind spots when parking ⚠ Avoid contact with curbs, bumps and objects that can compress the flaps with excessive force. Be sure to check wheel clearances, especially on vehicles equipped with aftermarket wheels and suspensions.

QUESTION ON INSTALLATION? CONTACT US ONLINE [www.rallyarmor.com/support](http://www.rallyarmor.com/support)

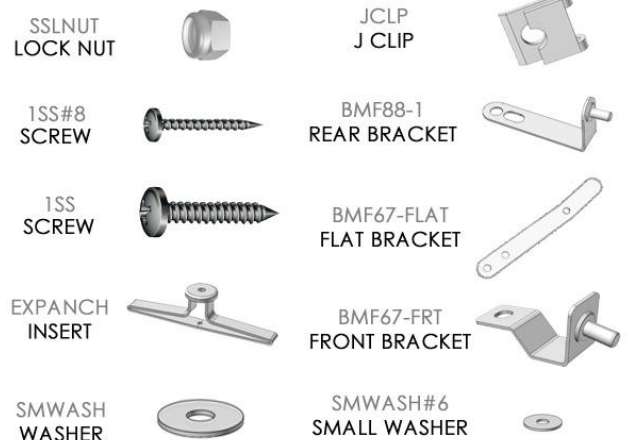
NEED TO PURCHASE REPLACEMENT PARTS? SEND RECEIPT OR PHOTO OF RALLY ARMOR LOGO ON FLAPS TO US [www.rallyarmor.com/support](http://www.rallyarmor.com/support)

### IMPORTANT NOTES

### INSTALLATION KIT CONTENTS



QUANTITY	PART	ITEM ID
4	LOCK NUT	SSLNUT
6	SCREW	1SS#8
2	SCREW	1SS
14	WASHER	SMWASH
4	SMALL WASHER	SS6WASH
4	J CLIP	JCLP
2	INSERT	EXPANCH
2	REAR BRACKET	BMF88-1
2	FRONT BRACKET	BMF67-FRT
4	FLAT BRACKET	BMF67-FLAT



**Recommended Tools** Low-profile offset or ratcheting screw driver, 7/16<sup>th</sup> wrench, flathead screwdriver.

**Important Tips** Installation should be done on an even surface. Do not use power tools to tighten hardware. Hand tools only. Avoid overtightening.

### RALLY ARMOR - A BIT ABOUT OUR STANDARD IN MUD FLAPS

Rally Armor mud flaps are fabricated from a high grade polyurethane plastic that is rigorously reviewed for quality and consistency. As with all manufacturing processes, controlled conditions and multiple QC checkpoints minimize major irregularities, however certain very minor surface layer marks appear periodically. These are visual variations that do not affect construction nor do they impede the performance of the flaps. Most matte away as the material ages naturally with continued exposure to the outdoors. Each flap is unique in appearance yet all are equally structurally sound.



## 2019+ Toyota Corolla Hatchback Mud Flap Installation Instruction

### FRONT MUD FLAP

**Bracket & Hardware 1 x Front Flap → 1 x SSLNUT; 1 x BMF67-FLAT; 1 x BMF67-FRT; 4 x SMWASH ; 1 x 1SS OR OE SCREW**

Turn steering wheel towards the side you are working to gain access to the inner wheel well.

**FIGURE A** Remove and retain outer fender fasteners. If present, remove splash guard.

**FIGURE B/C** Remove and retain lower fender liner bolt. Install FRONT BRACKET BMF67-FRT bolt stud side facing tire.

Do not fully tighten.

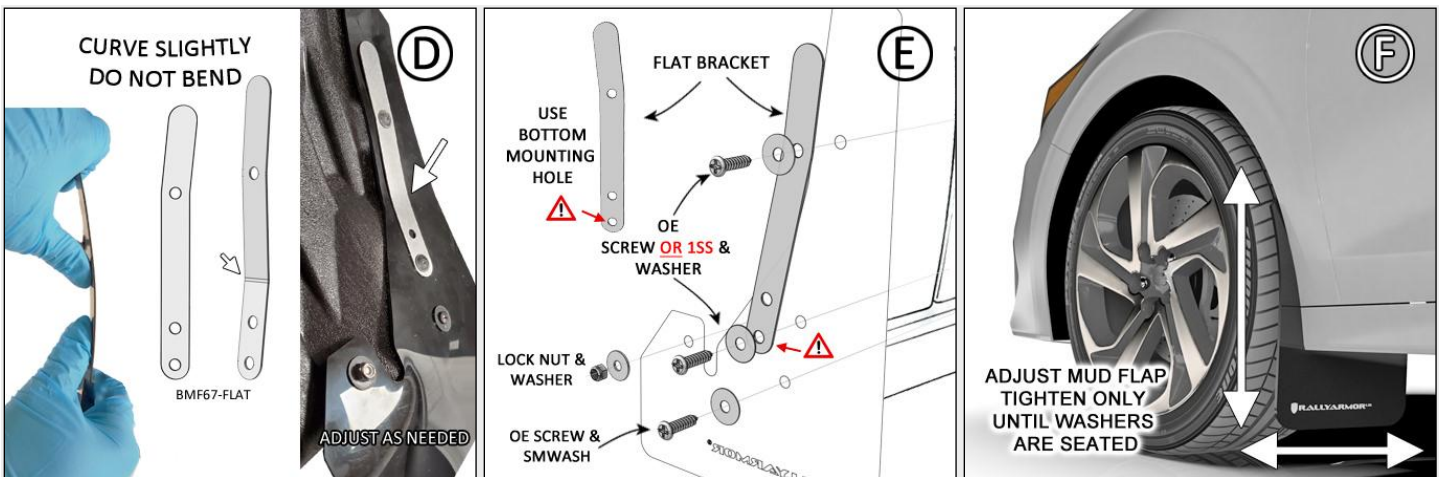


**FIGURE D** Slightly curve FRONT BRACKET. Adjust as needed for flush fitment.

**FIGURE E** Logo-side of flap facing rear of vehicle, install original screws with WASHER SMWASH through FLAT BRACKET and mud flap.

Use bottommost mounting point on FLAT BRACKET. Install LOCK NUT SSLNUT and WASHER on inner mounting point BMF67-FRT. **Do not tighten completely.**

**FIGURE F** Hand tighten only until washers are seated against flap. **Adjust as needed.**







**2019+ Toyota Corolla Hatchback Mud Flap Installation Instruction**

**REAR MUD FLAP**

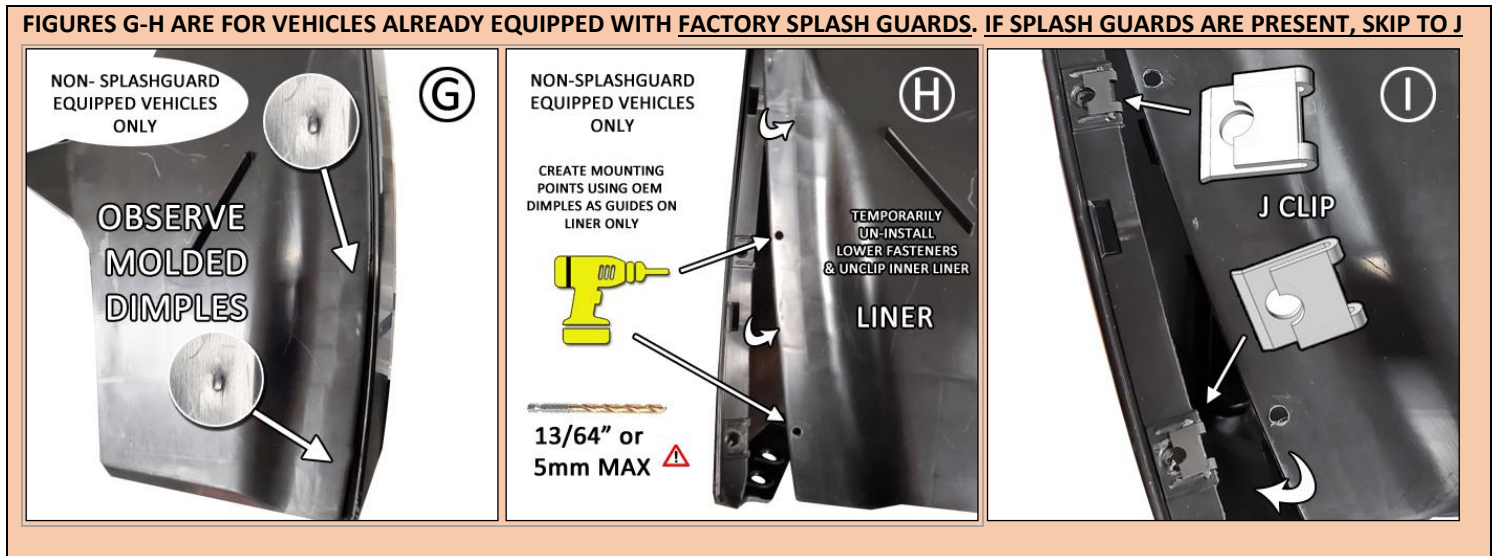
**FIGURES G-H ARE FOR VEHICLES NOT EQUIPPED WITH FACTORY SPLASH GUARDS. SKIP TO J IF SPLASH GUARDS ARE PRESENT**

**Bracket & Hardware 1 x Rear Flap → 1 x BMF67-FLAT; 1 x BMF88-1; 1 x EXPANCH; 3 x 1SS#8 & 2 x SS6WASH OR OE SCREWS; 3 x SMWASH ;1 X SSLNUT; 2 x JCLIP or 2 x OE retainers**

**FIGURE G** Observe molded dimples on outer edge of wheel well liner indicating location of factory mud guard mounting points.

**FIGURE H** Remove lower fasteners then pull liner away. Create a 13/64" or 5mm hole through mounting points.

**FIGURE I** Mount J CLIP over bumper mounting points. Re-install liner.



**FIGURE J/K** Remove existing lower outer mud guard fasteners.

**FIGURE L** Compress INSERT by pinching outer portion (2) and pressing inner portion (1).





## 2019+ Toyota Corolla Hatchback Mud Flap Installation Instruction

**FIGURE M** Install REAR BRACKET BMF88-1 with INSERT EXPANCH through lower mounting point. Secure to vehicle with SCREW 1SS#8.

**FIGURE N** Note placement of REAR BRACKET on liner. Do not fully tighten.

**FIGURE O** Logo-side of flap facing rear of vehicle, re-install EXISTING OE SCREW or 1SS#8 SCREW and SS6WASH with WASHER into mounting points 1 and 2 through bracket then mud flap. Use FLAT BRACKET upper mounting point. Secure lower portion of mud flap with LOCK NUT and WASHER. **Hand tighten** until WASHERS are seated against flap and bracket. **Adjust as needed**





**2019+ Toyota Corolla Hatchback Mud Flap Installation Instruction**

FRONT

**RALLYARMOR**<sup>®</sup>  
MF67 MOUNTING DIAGRAM

REAR

