

IMF81



2023+ KIA Sportage Mud Flap Installation Instructions

View instructions and photos online www.rallyarmor.com

CARE AFTER INSTALLATION Once installed, vehicle owner is responsible for condition of mud flaps and all costs associated with replacing damaged or lost parts. Warranty covers manufacturer defect on new, never installed parts.

- ⚠ Watch for blind spots when parking
 - ⚠ Avoid contact with curbs and objects that compress flaps with excessive force.
- Check wheel clearances, especially on vehicles equipped with aftermarket wheels and suspensions.

QUESTION ON INSTALLATION? CONTACT www.rallyarmor.com/support

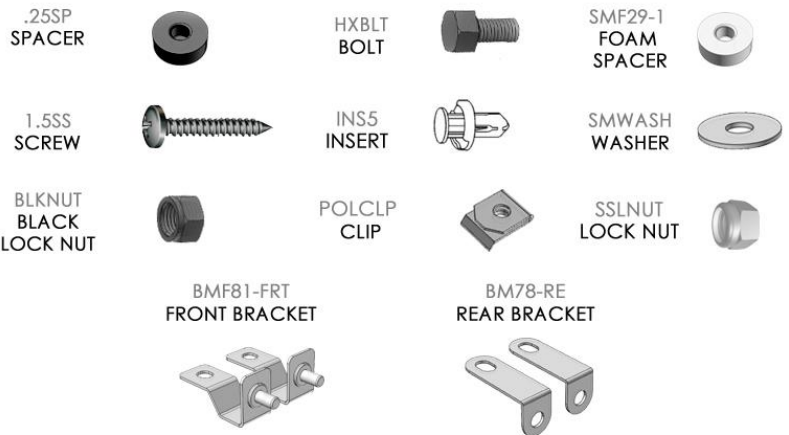
NEED TO PURCHASE REPLACEMENT PARTS? SEND RECEIPT OR PHOTO OF MUD FLAPS TO www.rallyarmor.com/support

IMPORTANT NOTES

INSTALLATION KIT CONTENTS



QUANTITY	PART	ITEM ID
4	SPACER	.25SP
8	SCREW	1.5SS
2	BLACK LOCK NUT	BLKNUT
2	BOLT	HXBLT
4	INSERT	INS5
4	CLIP	POLCLP
4	FOAM SPACER	SMF29-1
2	LOCK NUT	SSLNUT
14	WASHER	SMWASH
2	FRONT BRACKET	BMF81-FRT
2	REAR BRACKET	BMF78-RE



Recommended Tools Low-profile offset or ratcheting screwdriver, 7/16th wrench, flathead screwdriver.

Important Tips Installation should be done on an even surface. **Do not use power tools to tighten hardware. Hand tools only. Avoid overtightening.**

RALLY ARMOR - A BIT ABOUT OUR STANDARD IN MUD FLAPS

Rally Armor mud flaps are fabricated from a high grade polyurethane plastic that is rigorously reviewed for quality and consistency. As with all manufacturing processes, controlled conditions and multiple QC checkpoints minimize major irregularities, however certain very minor surface layer marks appear periodically. These are visual variations that do not affect construction nor do they impede the performance of the flaps. Most matte away as the material ages naturally with continued exposure to the outdoors. Each flap is unique in appearance yet all are structurally sound.

2023+ KIA Sportage Mud Flap Installation Instructions

FRONT MUD FLAP

1 Front Flap Bracket & Hardware → 1 x BMF81-FRT; 2 x 1.5SS; 1 x INS5; 2 x POLCLP; 3 x SMWASH; 2 x SMF29-1; 1 x SSLNUT

To access inner wheel well area, turn steering wheel towards installation side.

FIGURES A/B Remove factory screws 1 - 2. Install POLCLP over mounting points. Re-install liner.

FIGURE C Stud facing tire, place BMF81-FRT under side skirt. Install INS5.

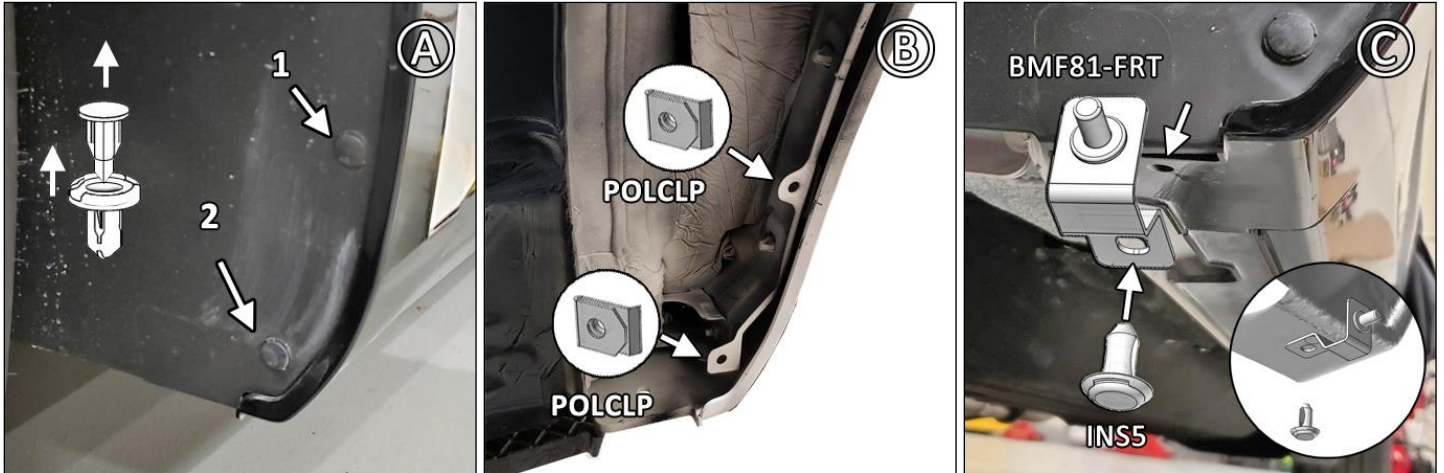
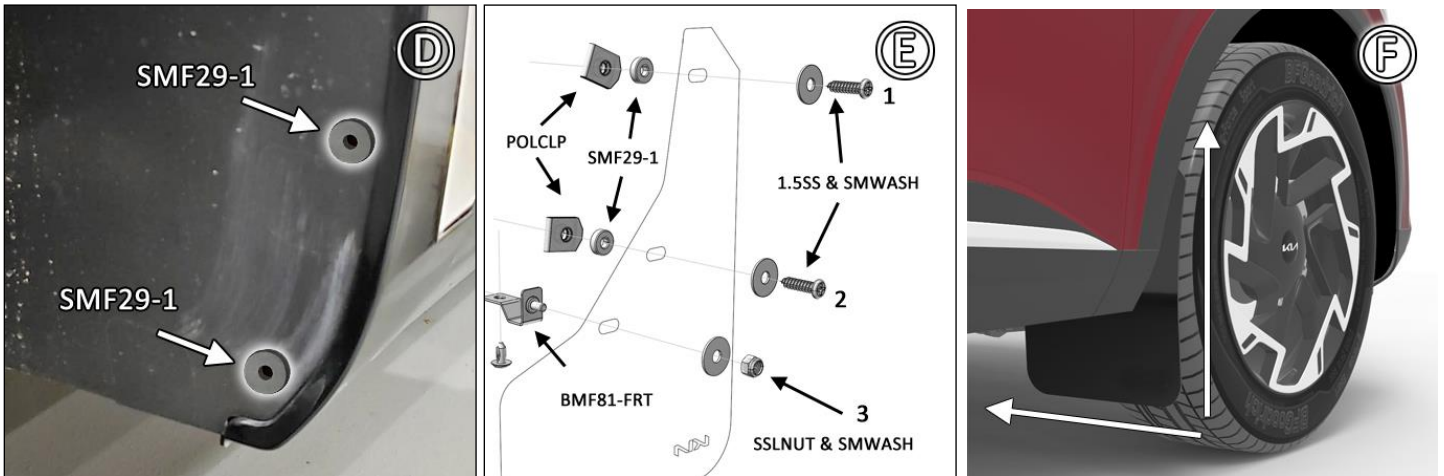


FIGURE D Adhere SMF29-1 over mounting points 1 & 2.

FIGURE E Position flap with logo facing vehicle rear. Place 1.5SS and SMWASH through mounting points 1 & 2. Install SSLNUT and SMWASH into mount 3. Tighten until washers are just seated.

FIGURE F Mud flap should be parallel to even ground before hand-tightening washers. Do not overtighten.



REAR MUD FLAP

1 Rear Flap Bracket & Hardware → 1 x BMF78-RE; 2 x .25SP; 2 x 1.5SS; 1 X BLKNUT; 1 x HXBLT; 1 x INS5; 4 x SMWASH

FIGURES G/H Remove factory fasteners 1, 2 and underbody insert 3.

FIGURE I Position short end BMF78-RE to the ground, against lower liner mounting point. Install INS5.

2023+ KIA Sportage Mud Flap Installation Instructions

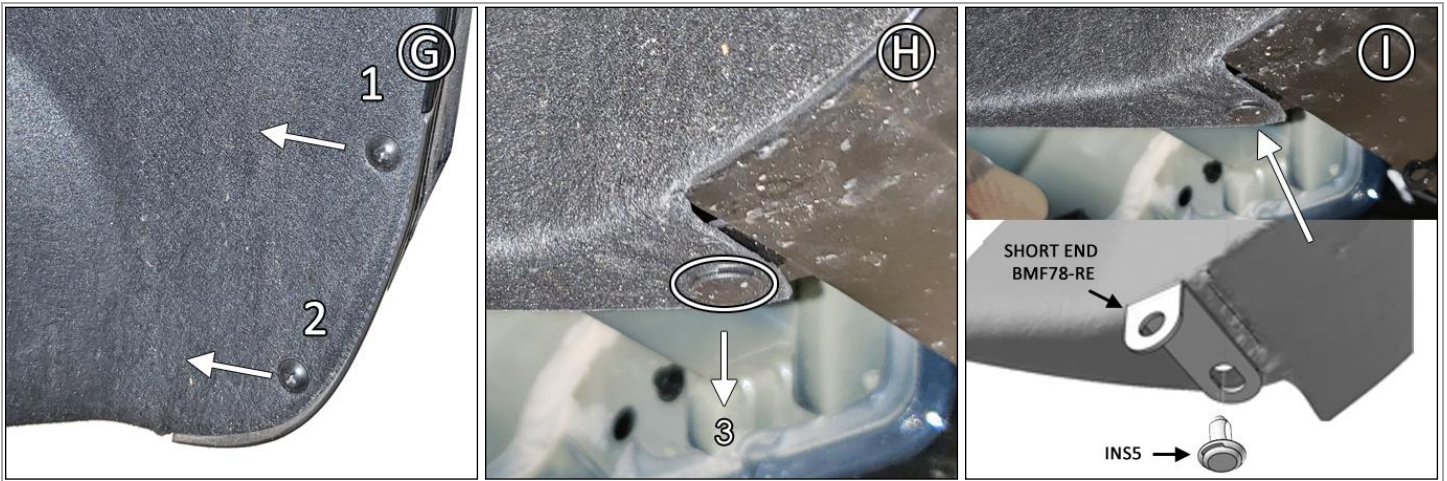
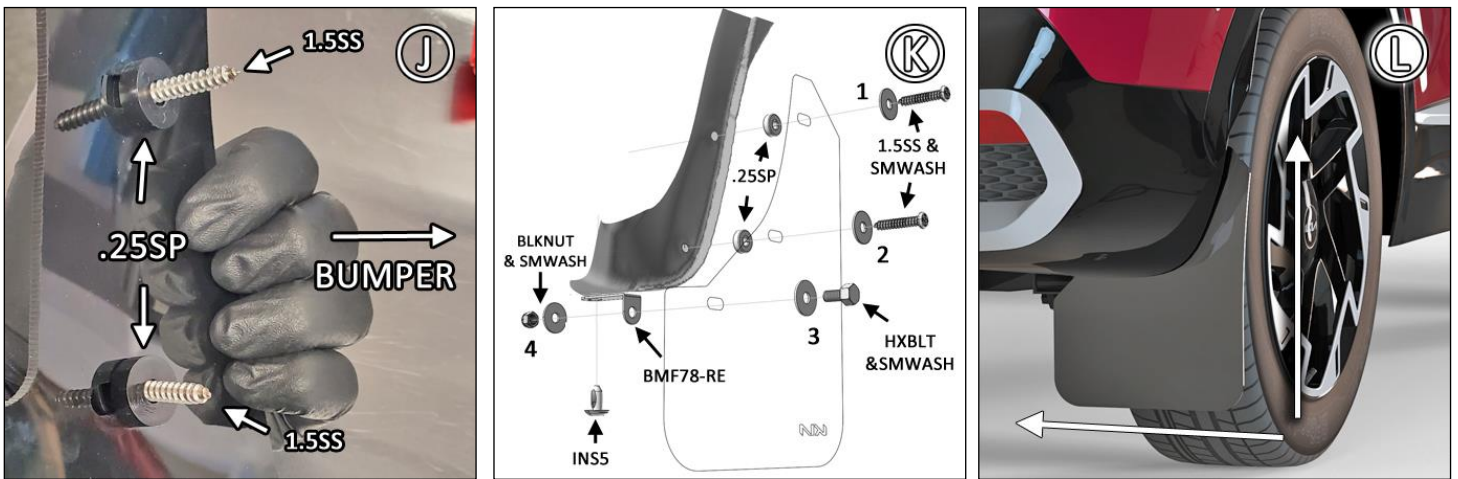


FIGURE J On logo side of flap, place .25SP against mounting points 1 & 2.

FIGURE K Logo side of flap facing vehicle rear, place 1.5SS and SMWASH through mounting points 1, 2 and .25SP. Install HXBLT, SMWASH to mount 3. Fasten BLKNUT and SMWASH to mount 4. Tighten washers until just seated.

FIGURE L Ensure mud flap is parallel to even ground before hand-tightening fasteners.



IMF81



2023+ KIA Sportage Mud Flap Installation Instructions

FRONT REAR MF81 MOUNTING DIAGRAM

