

2022+ VW MK8 GOLF GTI & GOLF R MUD FLAP INSTALLATION INSTRUCTIONS

View instructions and photos online www.rallyarmor.com

CARE AFTER INSTALLATION Once installed, vehicle owner is responsible for condition of mud flaps and all costs associated with replacing damaged or lost parts. Warranty covers manufacturer defect on new, never installed parts.

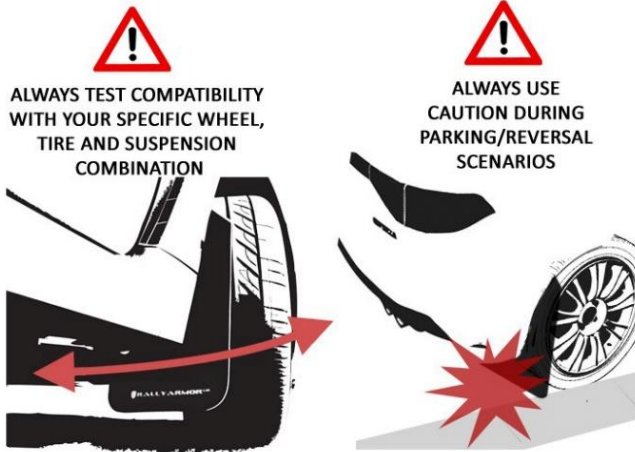
- ⚠ Watch for blind spots when parking
 - ⚠ Avoid contact with curbs and objects that compress flaps with excessive force.
- Check wheel clearances, especially on vehicles equipped with aftermarket wheels and suspensions.

QUESTION ON INSTALLATION? CONTACT www.rallyarmor.com/support

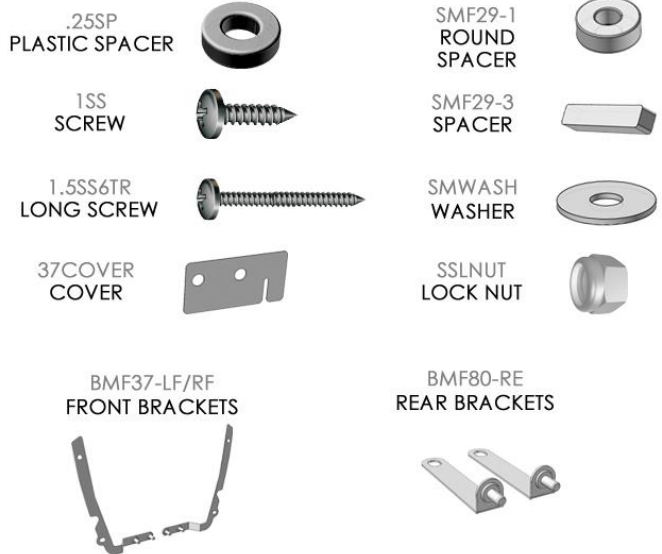
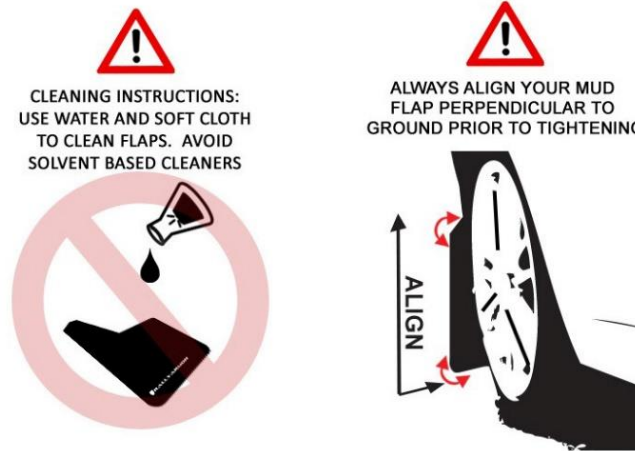
NEED TO PURCHASE REPLACEMENT PARTS? SEND RECEIPT OR PHOTO OF MUD FLAPS TO www.rallyarmor.com/support

IMPORTANT NOTES

INSTALLATION KIT CONTENTS



QUANTITY	PART	ITEM ID
4	PLASTIC SPACER	.25SP
4	SCREW	1SS
4	LONG SCREW	1.5SS6TR
2	COVER	37COVER
4	ROUND SPACER	SMF29-1
2	SPACER	SMF29-3
12	WASHER	SMWASH
6	LOCK NUT	SSLNUT
1	BRACKET LEFT FRONT	BMF37-LF
1	BRACKET RIGHT FRONT	BMF37-RF
2	BRACKET REAR	BMF80-RE



Recommended Tools T25 Torx Bit, Offset or ratcheting Phillips screwdriver, 7/16" wrench.

Important Tips Installation should be done on an even surface. **Do not use power tools to tighten hardware. Hand tools only. Avoid overtightening.**

RALLY ARMOR - A BIT ABOUT OUR STANDARD IN MUD FLAPS

Rally Armor mud flaps are fabricated from a high grade polyurethane plastic that is rigorously reviewed for quality and consistency. As with all manufacturing processes, controlled conditions and multiple QC checkpoints minimize major irregularities, however certain very minor surface layer marks appear periodically. These are visual variations that do not affect construction nor do they impede the performance of the flaps. Most matte away as the material ages naturally with continued exposure to the outdoors. Each flap is unique in appearance yet all are structurally sound.

2022+ VW MK8 GOLF GTI & GOLF R MUD FLAP INSTALLATION INSTRUCTIONS

FRONT MUD FLAP INSTALLATION

1 FRONT FLAP BRACKET & HARDWARE → BMF37-LF/RF; 2 x 1SS; 1 x 37COVER; 1 x SMF29-3; 2 x SMWASH; 2 x SSLNUT

To access inner wheel well area, turn steering wheel towards installation side.

FIGURE A Use a T-25 Torx bit to remove fender liner screws 1 and 2.

FIGURE B Studs facing away, bend angle section of BMF37-LF/RF bracket about 1/4" or 6mm. Adjust bracket to seat flush to liner.

FIGURE C Adhere spacer SMF29-3 on the opposite side of the two-stud section of the bracket.

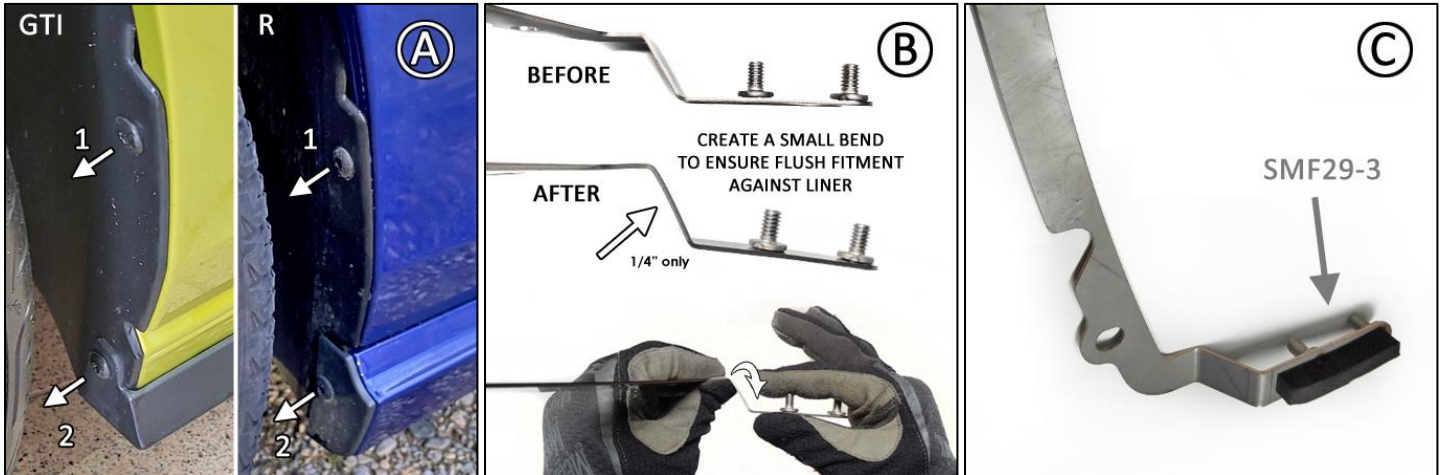
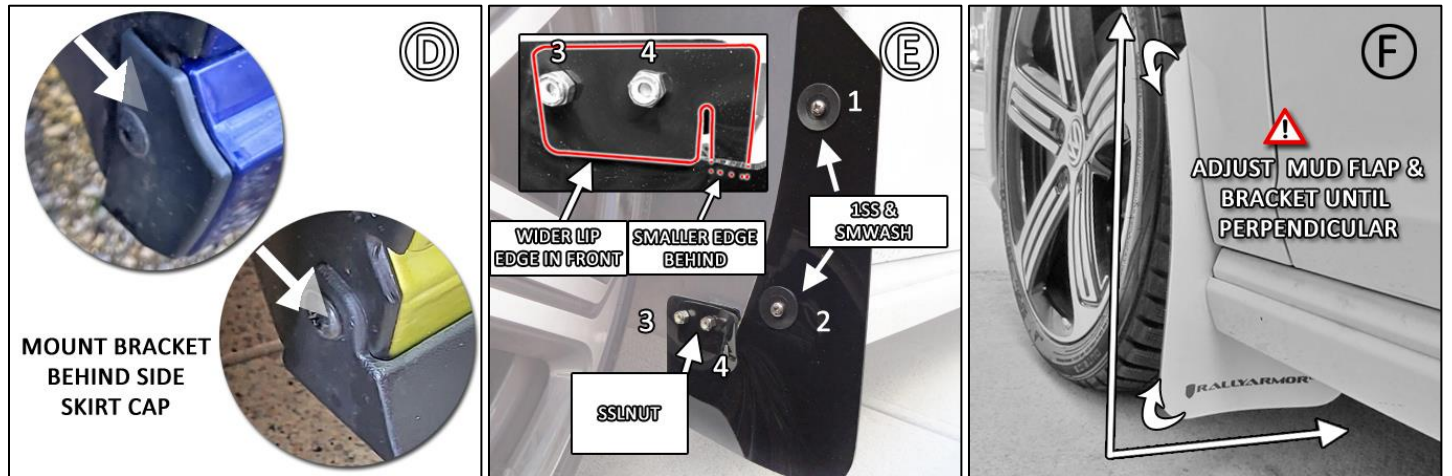


FIGURE D Install lower portion of BMF37-LF/RF bracket under side skirt cap. SMF29-3 should touch fender liner. Repeat and adjust Figure B as needed.

FIGURE E Align mud flap over bracket stud mounts 3 and 4. Place 37COVER over studs and mud flap, positioning wide lip over front of flap, narrow lip behind flap. Loosely thread SSLNUT over studs. Not tightening fully, install 1SS SCREW and WASHER on mounts 1 and 2.

FIGURE F Make slight angle adjustments, so flap is perpendicular to ground. Tighten screws just until washers are seated against flap.



REAR MUD FLAP INSTALLATION

1 REAR FLAP BRACKET & HARDWARE → BMF80-RE; 2 x .25SP; 2 x 1.5SS6TR; 2 x SMF29-1; 2 x SMWASH; 1 x SSLNUT

FIGURE G Remove OEM fender liner fasteners 1 - 3.

FIGURE H Install BMF80-RE into mount 3 with original screw and SMWASH.

FIGURE I Adhere SMF29-1 to .25SP.

2022+ VW MK8 GOLF GTI & GOLF R MUD FLAP INSTALLATION INSTRUCTIONS

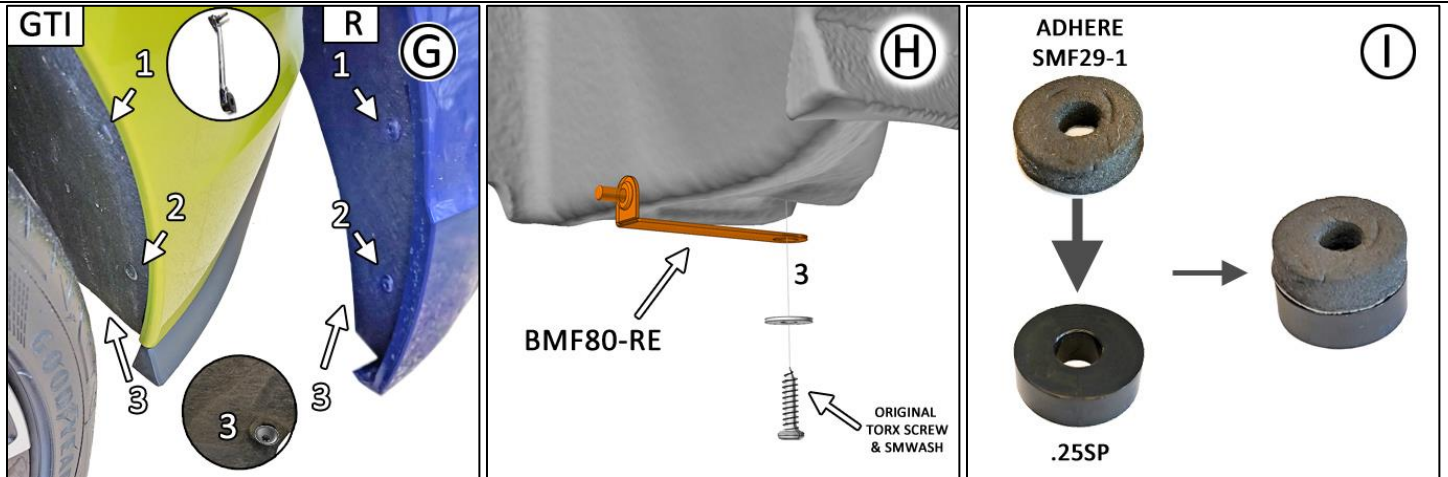
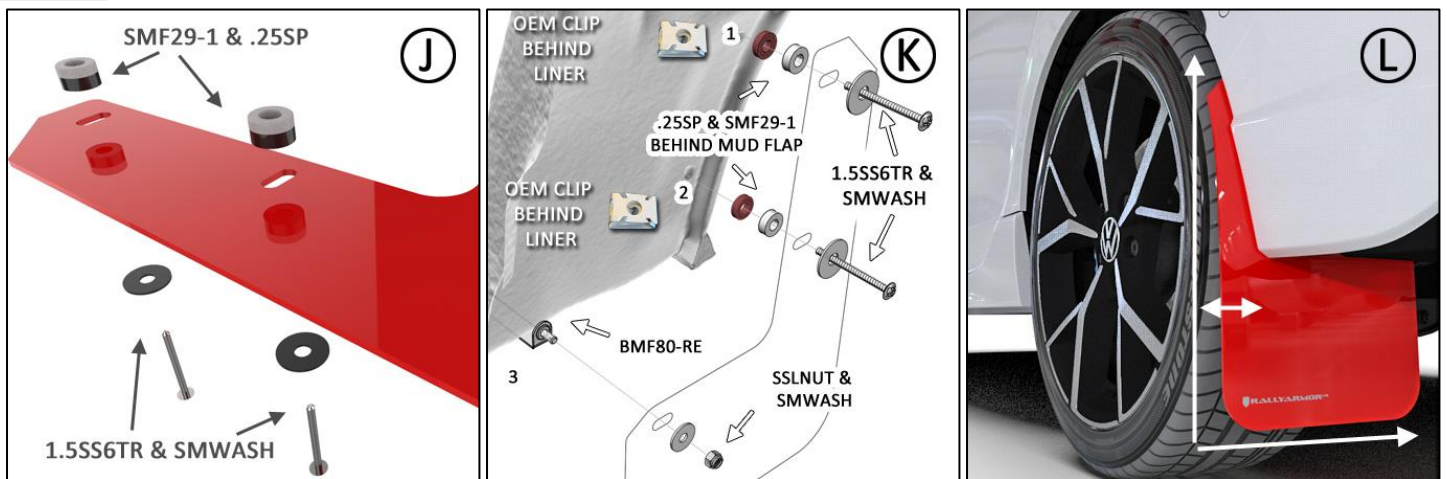


FIGURE J SMF29-1 and .25SP mounts **behind** flap, against inner liner. Place 1.5SS6TR and SMWASH through flap and .25SP.

FIGURE K Logo-side of flap facing liner, locate OEM clip mounts 1 and 2 behind liner then fasten 1.5SS6TR LONG SCREW into both. Install SMWASH and SSLNUT on mount 3 BMF80-RE stud. Do not fully tighten.

FIGURE L Make slight angle adjustments to flap before hand-tightening fasteners, just until seated.



Content and images are copyright of Rally Armor® LLC

IMF80



2022+ VW MK8 GOLF GTI & GOLF R MUD FLAP INSTALLATION INSTRUCTIONS



MF80 MOUNTING DIAGRAM

FRONT

REAR

